



Over 20 years' experience designing batteries for
Solar and Wind energy storage.

AGM Deep Cycle Power For Grid Tied and Off Grid Systems

Sun Xtender® Battery		Overall Dimensions			Unit Weight	Nominal Capacity Ampere Hours @ 25° C (77° F) to 1.75 volts per cell				
Part Number	Volts	Inches (mm)				1 Hour Rate	2 Hour Rate	4 Hour Rate	8 Hour Rate	24 Hour Rate
		Length	Width	Height	LB / KG					
PVX-340T	12	7.71 (196)	5.18 (132)	6.89 (175)	25 (11.4)	21	27	28	30	34
PVX-420T	12	7.71 (196)	5.18 (132)	8.05 (204)	30 (13.6)	26	33	34	36	42
PVX-490T	12	8.99 (228)	5.45 (138)	8.82 (224)	36 (16.4)	31	39	40	43	49
PVX-560T	12	8.99 (228)	5.45 (138)	8.82 (224)	40 (18.2)	36	45	46	49	56
PVX-690T	12	10.22 (259)	6.6 (168)	8.93 (227)	51 (23.2)	42	53	55	60	69
PVX-840T	12	10.22 (259)	6.6 (168)	8.93 (227)	57 (25.9)	52	66	68	74	84
PVX-890T	12	12.9 (328)	6.75 (172)	8.96 (228)	62 (28.2)	55	70	72	79	89
PVX-1040HT	12	13.12 (333)	6.6 (168)	8.93 (227)	66 (30)	65	82	85	93	104
PVX-1040T	12	12 (304)	6.6 (168)	8.93 (227)	66 (30)	65	82	85	93	104
PVX-1080T	12	12.9 (328)	6.75 (172)	8.96 (228)	70 (31.8)	68	86	88	97	108
PVX-2120L	12	20.76 (527)	8.63 (219)	8.63 (219)	138 (62.7)	136	172	176	194	212
PVX-2580L	12	20.76 (527)	10.89 (277)	9.77 (248)	165 (75)	165	209	214	236	258
PVX-1030T	6	10.21 (259)	6.37 (161)	8.92 (226)	42 (19.1)	65	82	85	93	103
PVX-1380T	6	10.19 (259)	6.6 (167)	8.92 (226)	51 (23.2)	84	106	110	120	138
PVX-2240T	6	10.28 (261)	7.06 (179)	10.0 (254)	67 (30.4)	143	180	185	204	224
PVX-3050T	6	10.28 (261)	7.06 (179)	13.02 (330)	91 (41.3)	190	245	270	280	305
PVX-5040T	2	10.22 (259)	6.6 (167)	8.93 (226)	57 (25.9)	312	396	408	444	504
PVX-5340T	2	12.9 (328)	6.75 (171)	8.96 (228)	62 (28.2)	330	420	432	474	534
PVX-6240T	2	12.01 (305)	6.6 (168)	8.93 (227)	66 (30)	390	492	510	558	624
PVX-6480T	2	12.9 (328)	6.75 (171)	8.96 (228)	70 (31.8)	408	516	528	582	648
PVX-6720T	2	10.28 (261)	7.06 (179)	10.0 (254)	70 (31.8)	429	540	555	612	672
PVX-9150T	2	10.28 (261)	7.06 (179)	13.02 (330)	94 (42.6)	570	735	810	840	915

Ratings: Capacity ratings are after 15 cycles; stated at 77°F (25°C) to 1.75 volts per cell.

Terminal Torque Values: [M6 use 35 in-lbs / 4.0 nm.] [M8 use 70 in-lbs / 7.9 nm.]

Handles: All batteries include built in lifting handles except the PVX-490T and PVX-560T.

Never install batteries in a sealed compartment or container.

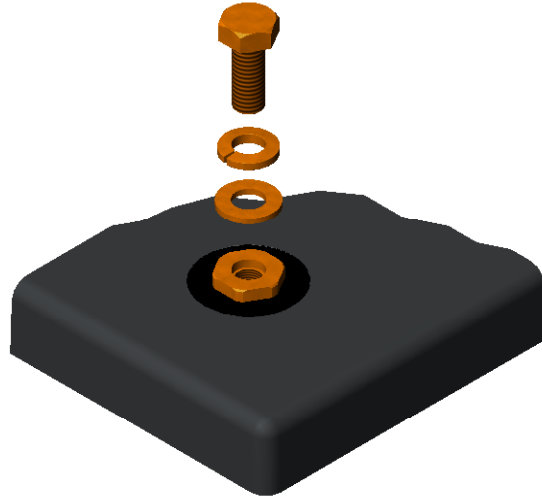
Sun Xtender® Batteries

Concorde Battery Corporation, 2009 San Bernardino Road, West Covina, CA
91790 U.S.A.

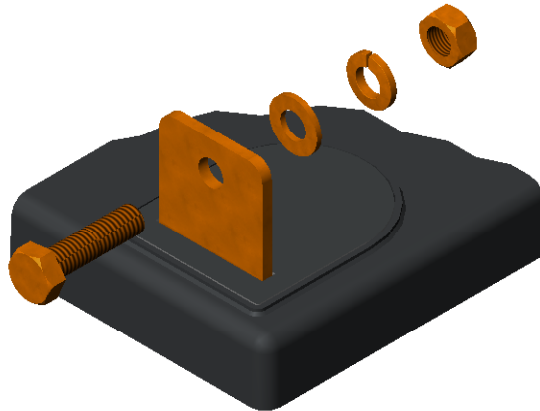
Phone 626-813-1234 | | www.sunxtender.com

Sun Xtender Battery Terminal Types

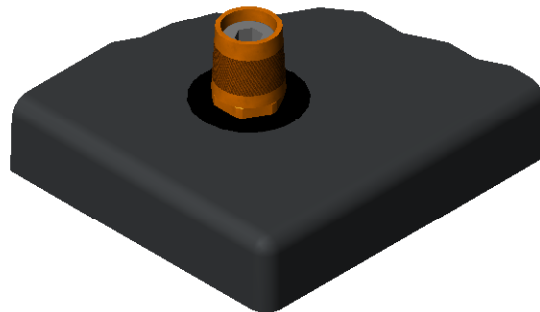
Copper Alloy Corrosion Free Connections for Maximum Conductivity



M8 Threaded Insert (Copper Alloy)
M6 Threaded Insert for PVX-340T & PVX-420T only



L-Blade Terminal (Solid Copper)
M8 Hardware



"A" - SAE Automotive Post (Copper Alloy)
Available as a separate kit, or installed at the factory
Kit Part Number: 6918