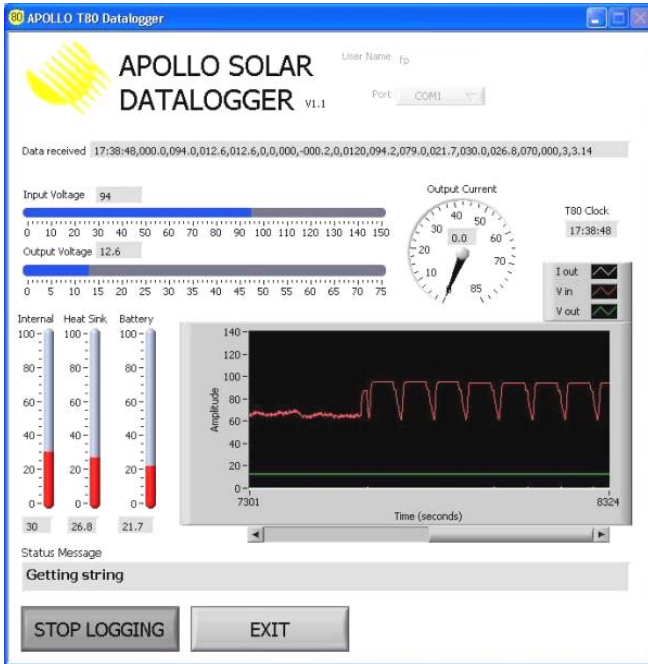




APOLLO SOLAR



- Data Logging software for Windows displays real time and history.
- Comprehensive status of PV array, and Battery System
 - Battery State of Charge: % Full, Bar Graph and Amp-Hours
 - PV current and voltage
 - Battery charge/discharge Amps
 - Graph of Energy Harvest history
 - System diagnostics
 - T80 & battery temperatures
- Wireless connection to PC
 - 100 foot range in buildings
 - 300 feet outside (line of sight)
 - Repeater available
 - FCC approved
- USB interface for Windows
- Wireless Option Card for T80

Wireless Computer Link

PART NUMBER WCL100

**RF REMOTE USB CONNECTION
FOR PC DATA LOGGING OF THE—**

T80 TurboCharger™

Monitor the PV – Battery System on your PC

Battery system management in a convenient portable package. See what the PV array, the Charge Controller, the Battery and the Load are doing. Monitor PV / Battery system performance in real time and display graphical history for easy diagnostics.

Wireless USB Interface

Total galvanic isolation between the PC and the PV system avoids ground loops and noise problems. Operating power for the Wireless Link is provided via the USB port.

Simple installation

The RF link provides the ultimate in easy installation – no wires.



Wireless Option Card for the T80 TurboCharger™

The Wireless communication board installed in the T80 Option Card slot comes with a chassis mount antenna. The Wireless Option Card can be field installed in the T80 TurboCharger™ at any time.

Information Displayed

Historical data on energy production, usage, and number of days since fully charged is stored in the T80 *TurboCharger*[™] for ninety days. The WCL100 Wireless Computer Link sends data to the PC continuously when the PC is turned on so historical data storage is extended virtually without limit. The Apollo Solar Data Logging software provides a graphical display of system information in real time as well as the history.

The Data Logging display includes:

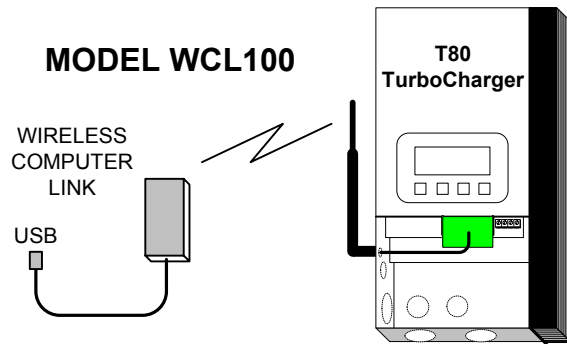
- PV input Voltage
- PV Input Current
- Battery Voltage
- Battery Current
- T80 Internal Temperature
- T80 Heat Sink Temperature
- Battery Sensor Temperature
- Battery State of Charge
- Battery Shunt Charge / Discharge current

Battery Energy Monitor Readout is Essential

The T80 *TurboCharger*[™] includes a built-in energy monitor using the TriMetric[™] technology. It measures and tracks power production and consumption then calculates the energy remaining in the battery. State of Charge (SOC) is displayed in Percent Full, Amp-hours and bar graph format. This is the “gas gauge” that is essential for battery based systems to be able to know how much energy is available.

(Note: TriMetric is a trademark of Bogart Engineering and is used by Apollo Solar under a license agreement.)

WCL100 System Block Diagram



WCL100 -- SPECIFICATIONS

RF Wireless Range	100 meters (300 feet) line of sight 30 meters (100 feet) in buildings (Subject to building construction)
RF Frequency	2.4 GHz FCC approved
Data update rate	Complete update every 10 seconds.

Specifications and features are subject to change without notice. 10/06

APOLLO SOLAR
23 F. J. Clarke Circle
Bethel, CT 06801
(203) 790-6400
www.Apollo-Solar.net