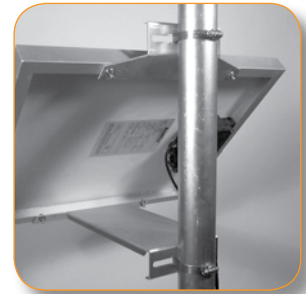


SunWize OEM Side-of-Pole Mount – One Module, Fixed tilt 45 Degree

Single module aluminum side-of-pole mount for SunWize OEM series of modules. OEM5/10 mount consists of pole bracket positioning the module to 45-degrees of tilt. Mount can be attached to pole, wall or roof, includes 2" pipe U bolt. The 13" long bracket has slots to allow adjustable band clamps for larger poles. The OEM5/10 mount also holds SolCharger 3, 6 and SC12 modules. OEM20/40 mount includes adjustable pipe clamps from 2" to 4" diameter. Pole bracket allows for use of 2' pipe U bolt.

Part #	Model	Rail Length	Pipe Size (sch40)	Max. Module Area	Weight
950SW5/10MTASSY	OEM 5/10	13	2-4	1.1	2.0
950UNILRGOEM-A	OEM 20/40	N/A	2-4	4.6	1.25

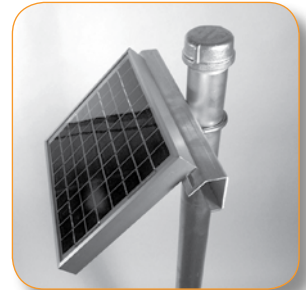


SW OEM 20/40 SOP Mount

SunWize Universal Side-of-Pole Mount – One Module, Adjustable Small, Medium and Large

Single module aluminum side-of-pole mounts feature a unique module frame clamping method that fits a variety of modules, no mounting holes required. Three sizes of mounts are offered for module widths up to 13", 18" or 26" wide, with adjustable tilt arm from 15 to 90-degrees. Mount includes a pole saddle bracket with captive stainless nuts for easy assembly, module mounting fasteners and pipe clamps adjustable from 2" to 4" OD poles.

Part #	Rail Length	Pipe Size (sch40)	Max. Module Area	Weight
950086	13	2-4	2.5	2.3
950087	18	2-4	4.5	3.0
950088	26	2-4	5.5	4.1
950089	18	2-4	1.1	3.5
950090	18	2-4	1.5	3.5
950091	18	2-4	2.0	3.5



SW OEM 5/10 SOP Mount



SW Multi-Module Adjustable SOP Mount

SunWize Universal Side-of-Pole Mount – Multi-Module Adjustable, 26.5" – 104" Rails

Multi module side-of-pole mounts feature heavy duty brushed aluminum mounting channels with a universal slotted pattern allowing a variety of modules to be adapted with many rails lengths offered. Mount consists of a panel rail set specified by length, pole saddle brackets specific for a range of pole diameters, tilt legs adjustable from 25 to 60-degrees, stainless fasteners, adjustable pipe clamps and thread locking compound. U-bolts for high wind zones are recommended as an option. (See accessory table for U-bolts offered.)

Part #	Rail Length	Pipe Size (sch40)	Max. Module Area	Weight
950037	26	2-4	10	9
950082	26	4-6	10	11
950076	26	8-10	10	11
950056	35	2-4	10	9.5
950083	35	4-6	10	9.5
950077	35	8-10	10	9.5
950036	53	2-4	20	12.5
950063	53	4-6	20	14.5
950078	53	8-10	20	14.5
950058	60	4-6	30	18
950084	60	8-10	30	18
950045	77	4-6	35	20
950085	77	8-10	35	20
950061	80	4-6	35	22
950068	80	8-10	35	22
950046	96	4-6	40	24
950079	96	8-10	40	24
950047	104	4-6	45	26
950080	104	8-10	45	26



SW Single Module Adjustable SOP Mount

Accessory	Part #
2" U-BOLT	851073
2.5" U-BOLT	851074
3" U-BOLT	851075
4" U-BOLT	851077
6" U-BOLT	851079
8" U-BOLT	851101
10" U-BOLT	851102
12" - 24"	
POLE ADAPTER	951028